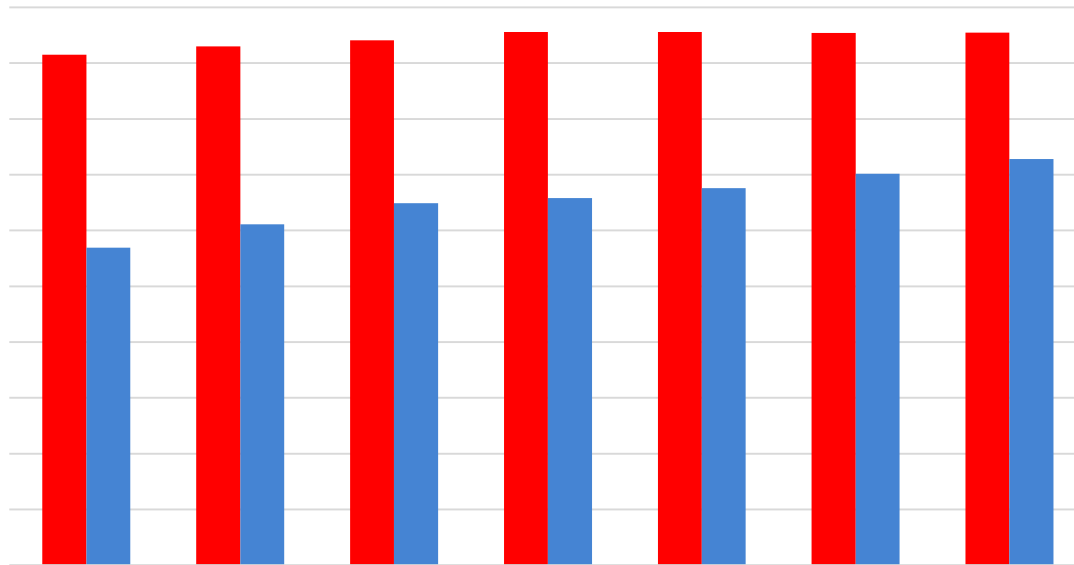


Mission: Lifeline Data

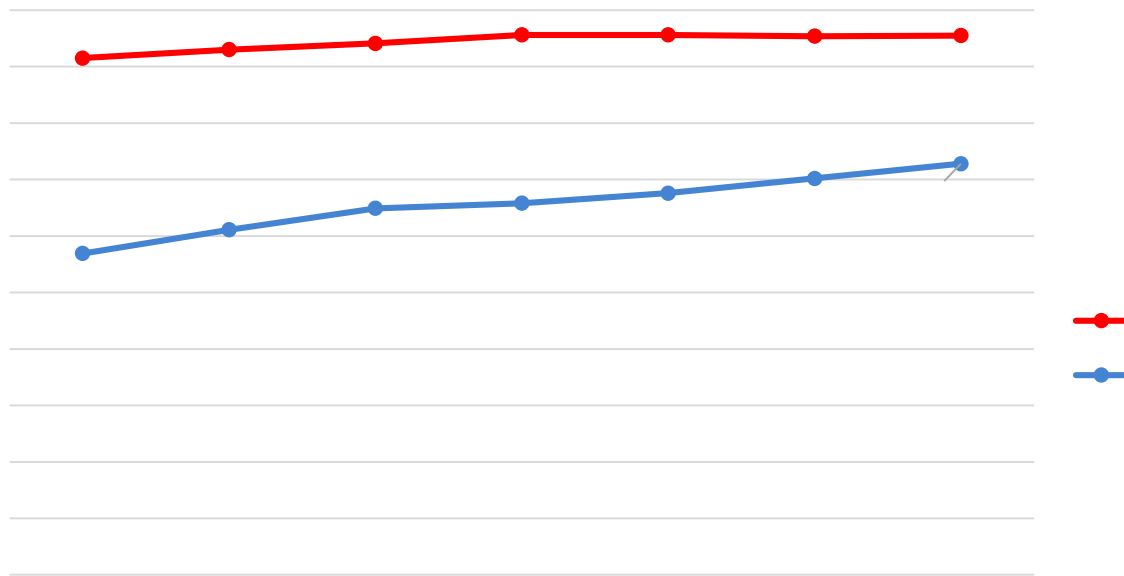
2010 2016

Using Mission: Lifeline Q1 Reports

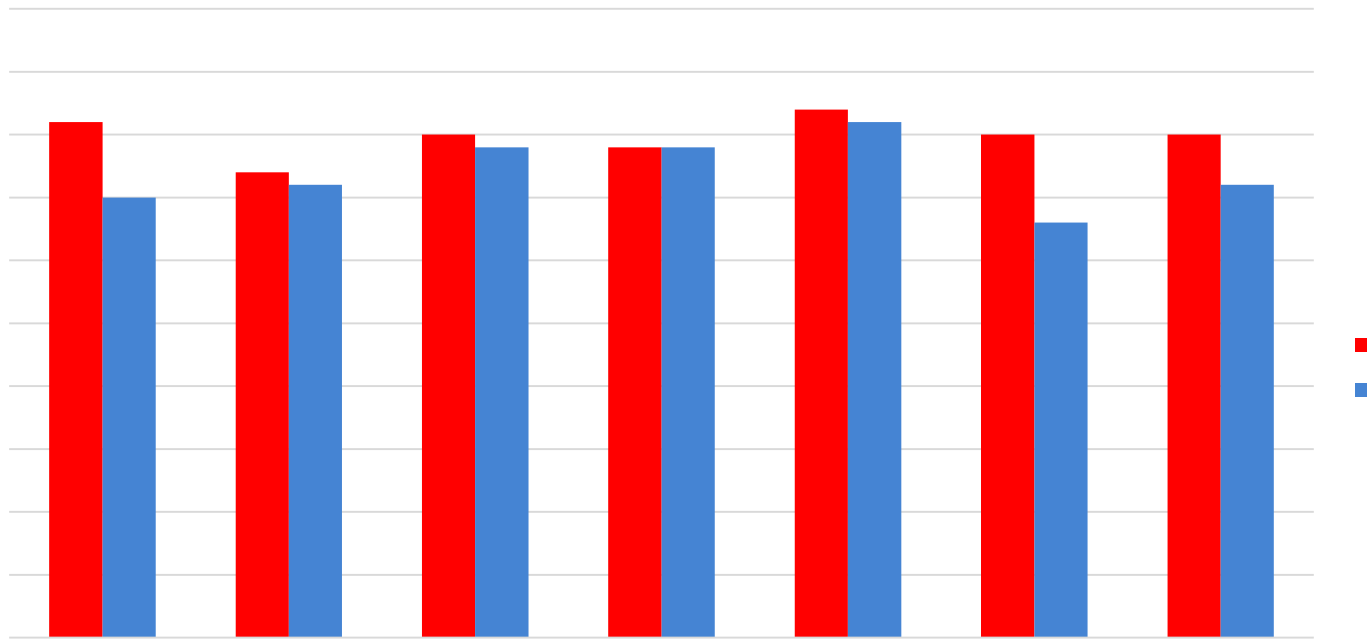
Mission: Lifeline Measures - % Door to Balloon and % EMS FMC to PCI \leq 90 Minutes



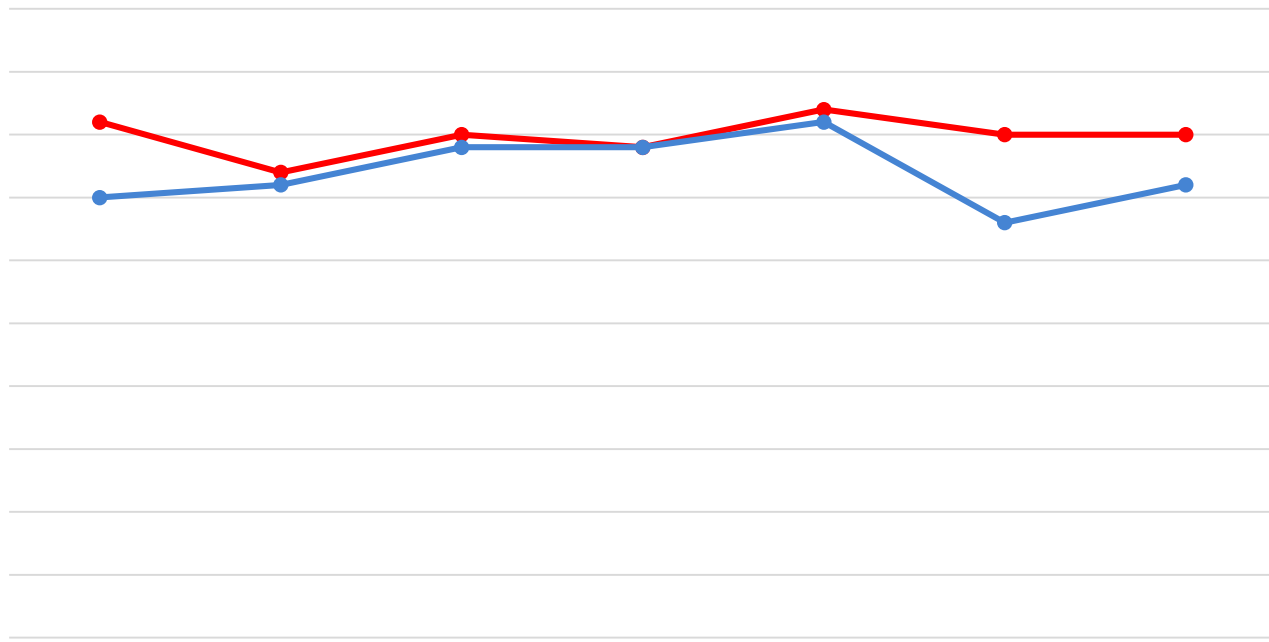
Mission: Lifeline Measures - % Door to Balloon and % EMS FMC to PCI \leq 90 Minutes



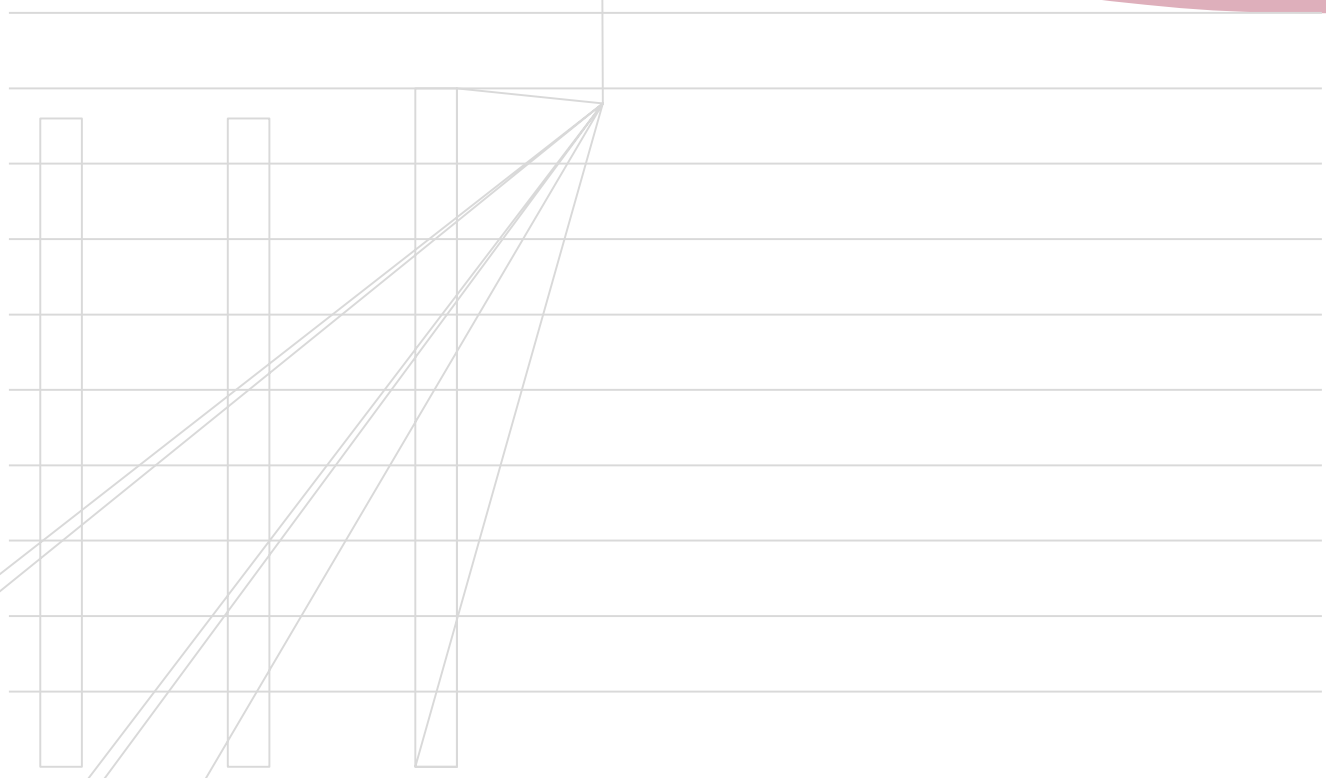
Mission: Lifeline Measures- % Aspirin on Arrival and % Aspirin on Discharge



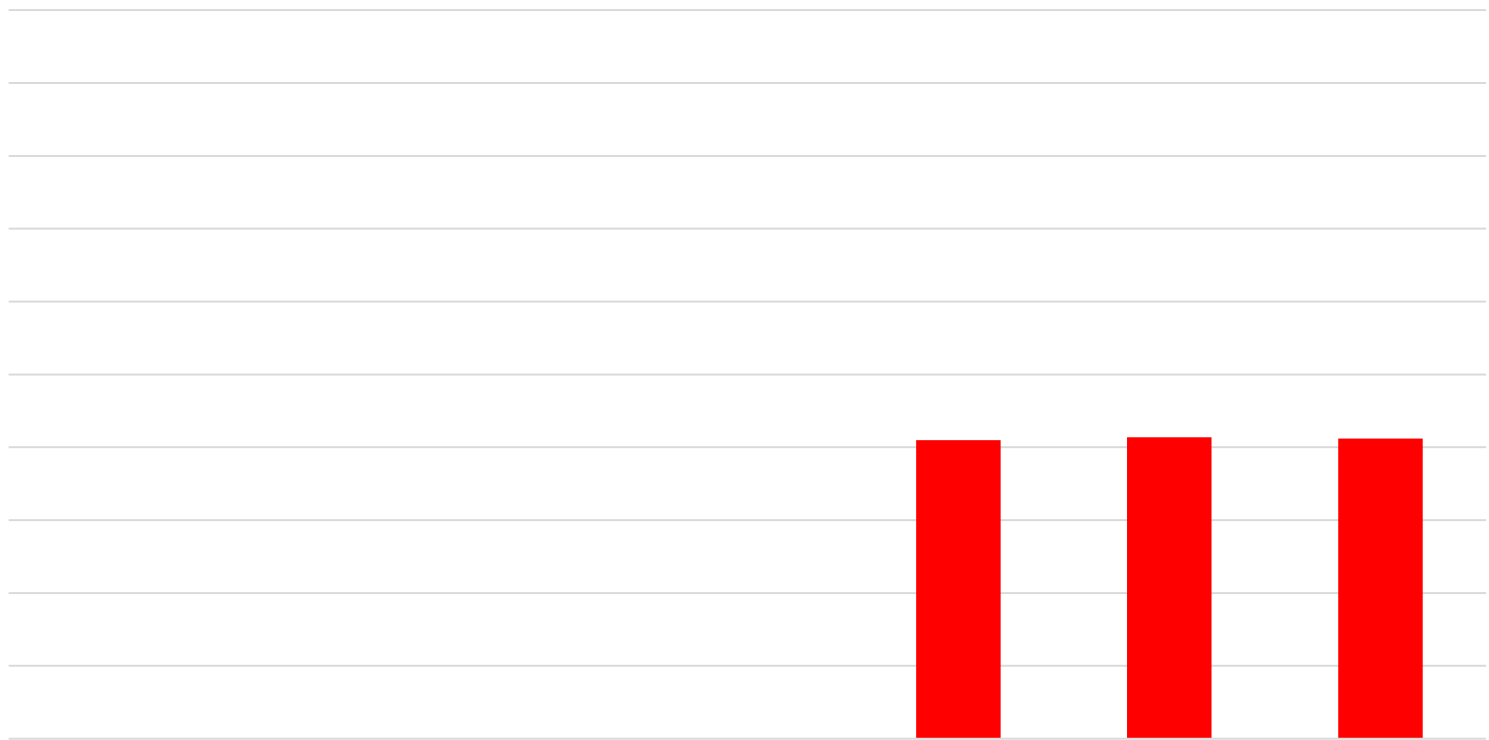
Mission: Lifeline Measures- % Aspirin on Arrival and % Aspirin on Discharge



Mission: Lifeline Measures- % bBlocker % Statin and % ACEI/ARB on Discharge



Mission: Lifeline Plus Measure - % Arrival at Referring Facility to PCI \leq 120 Minutes (Transfer for PCI patients, no lytics)

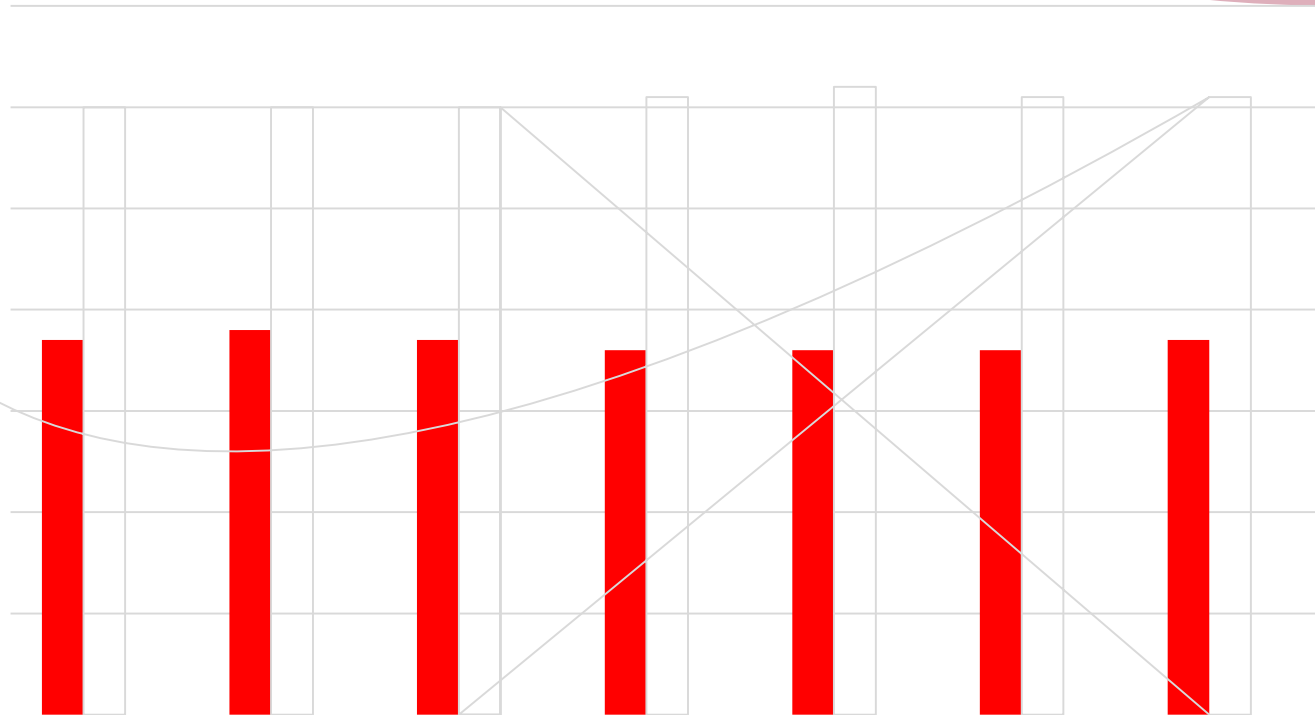


Mission: Lifeline Plus Measure - % Arrival at Referring Facility to PCI \leq 120 Minutes

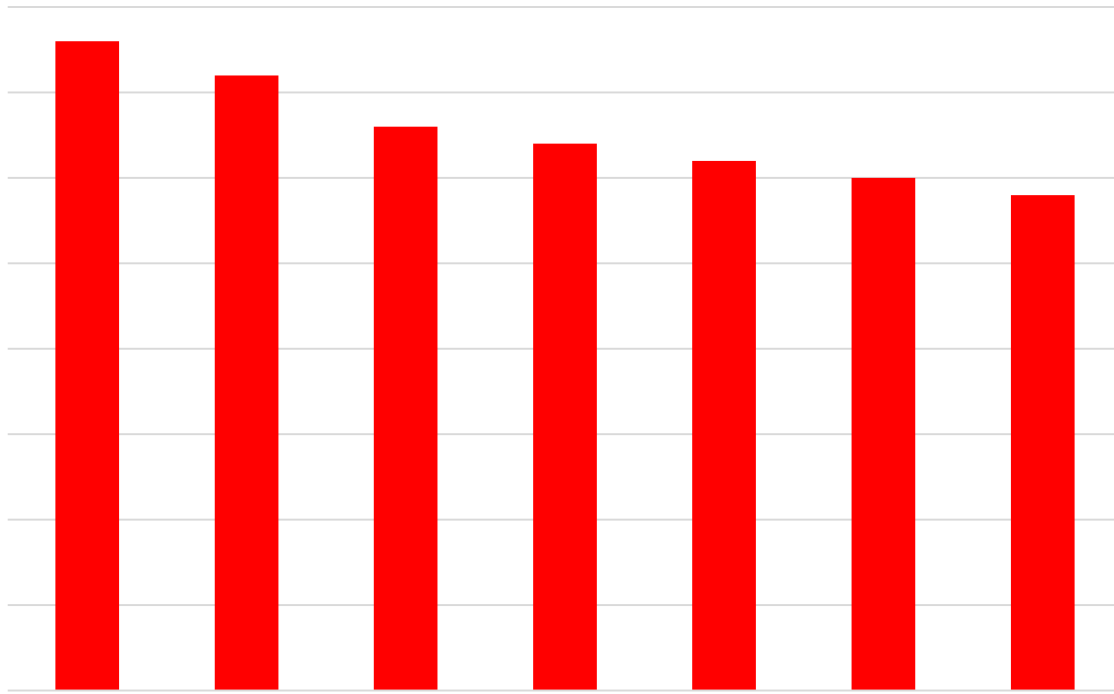
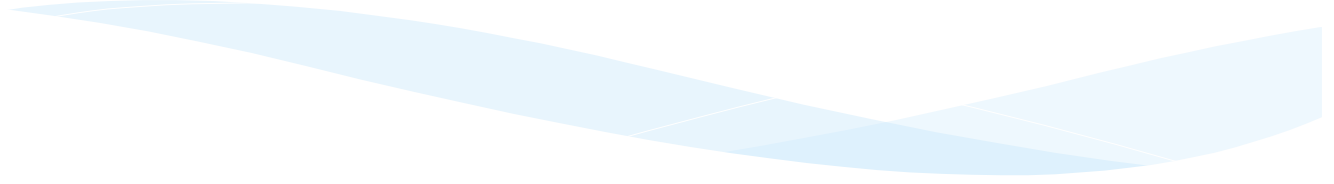
(Transfer for PCI patients, no lytics)



Arrival Mode to PCI Facility







Length of Stay in the Emergency Department

